

12A/118 Queens Road Five Dock NSW



Expand your business or establish a new enterprise in this expansive 218sqm commercial suite. Set on the upper level of "Royal Court", the flexible space offers a wealth of options for offices, call centre, health and fitness, education or consultancy in this Five Dock town centre fringe location.

Occupying the whole block between Queens Road, William Street and Kings Road, this older style commercial and industrial building with parking is ideally located for easy access by road or public transport. Opposite Five Dock Leisure Centre, it's close to the Canada Bay Club and golf courses, 1km to Five Dock town centre and convenient to City buses. Currently operating as a music studio, there's plenty of room for a creative fitout and space reconfiguration to design the perfect work environment and branding for your business.

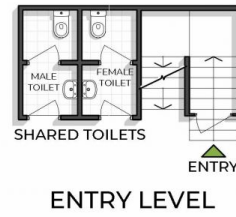
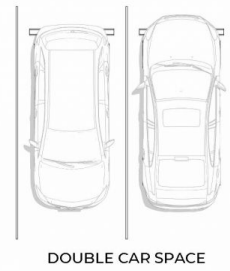
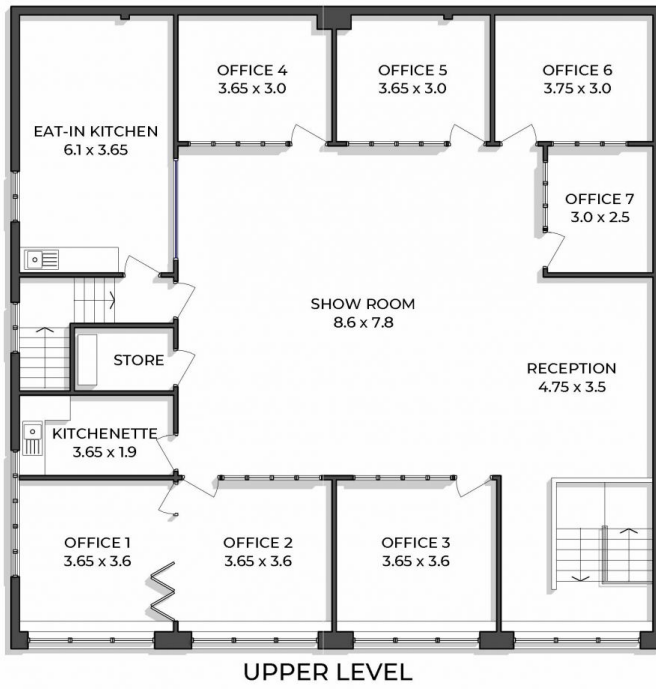
Price : \$43,600 pa
Building Size : 218.45 sqm
View : <https://www.rogermickhail.com.au/8054195>



John Lagounaris
02 9713 5900



Michelle Bernardinis
02 9713 5900



12a/118 Queens Road, Five Dock

The site plan and floor plan are not to scale, measurements are indicative and in meters. Bushes and trees are placed for illustration purposes. Plans should not be relied on. Interested parties should make and rely on their own enquiries.

roger m
mickhail

Internal area approx.: 218.45sqm