



3/206-210 Victoria Road Drummoyne NSW

3

Styled with a designer touch, this bright and contemporary office suite offers an excellent opportunity to grow your business, impress clients, and boost staff satisfaction. Located on the top floor of the distinctive Masonic Hall building, this suite features a boutique charm and modern ambiance ideal for a variety of businesses, consultancies, and professional services. Situated at the heart of Drummoyne's bustling commercial and retail hub, it's conveniently close to shops, cafes, buses, and parking, with easy access to Macquarie Park, Parramatta, Chatswood, and the City.

+ 148sqm top-floor office suite at the quiet rear of a character building.

[For full version visit the website](https://www.rogermickhail.com.au)

Type
Price
Building Size
View

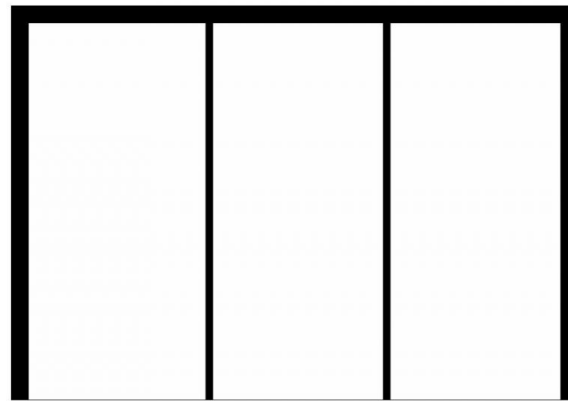
: Offices
: \$60,000 pa
: 148 sqm
: <https://www.rogermickhail.com.au/8097850>



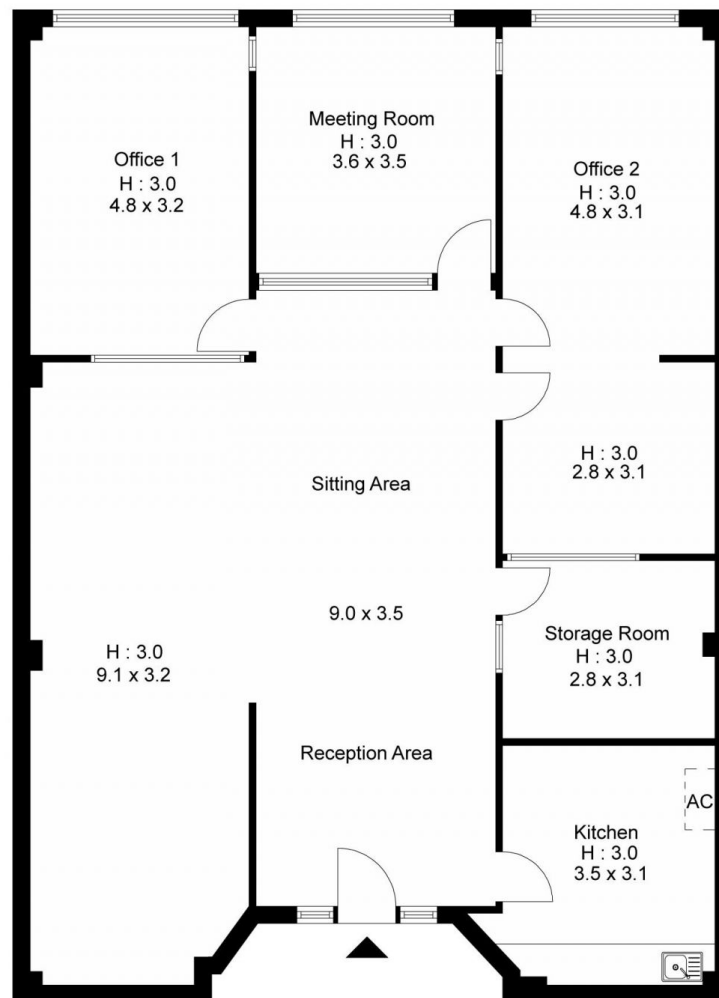
Michelle Bernardinis
02 9713 5900



John Lagounaris
02 9713 5900



3 Car Space
(Not In Position)



Internal Floor Area: 148 Sqm Approx

External Floor Area: 0 Sqm Approx

Total Floor Area: 148 Sqm Approx

3/206-210 Victoria Road, Drummoyne

roger 
mickhail

The floor plan is not to scale; measurements are indicative and in metres. Exterior elements are not in position.
Plans should not be relied on. Interested parties should make and rely on their own enquiries.

Produced by **DIAKRIT**