

**19/38-50 Lyons Road Drummoyne NSW**

Elevate your business and build your client base in this landmark location. Set on the upper level of the 1918 Sutton Buildings at the hub of Drummoyne's revitalised retail centre, this well-presented commercial suite offers light-filled flexible space with cafes, shops, parking and buses at the doorstep. The approx 114sqm open floorplan provides plenty of options for partitioned offices, consultancy suites or treatment rooms to accommodate a wide range of businesses, professional services or health and medical providers. Located on the corner of Victoria Road and Lyons Road, it's an Inner West high point, just 7km to the City and with easy access to Ryde, Chatswood, Macquarie Park technology precinct and Parramatta.

- Type** : Offices
- Price** : \$55,000 pa
- Building Size** : 114 sqm
- View** : <https://www.rogermickhail.com.au/81774>  
11

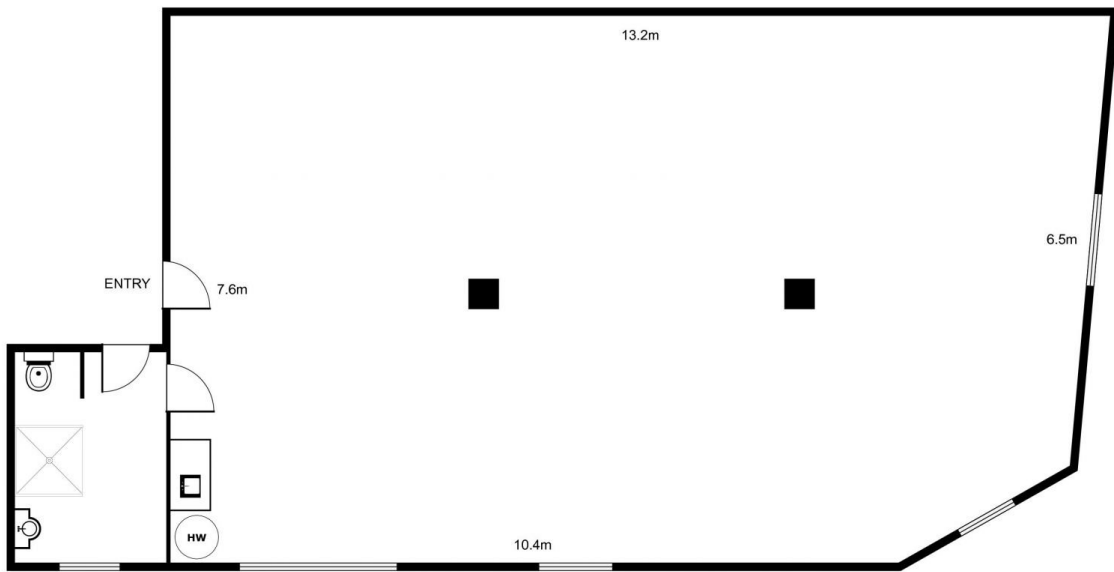
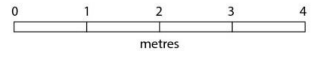


**John Lagouraris**  
02 9713 5900



**Michelle Bernardinis**  
02 9713 5900

[For full version visit the website](https://www.rogermickhail.com.au)



## 19/38-50 Lyons Road, Drummoyne

Total Area on Title approx.: 114m<sup>2</sup>

The site plan and floor plan are not to scale; measurements are indicative and in metres. Bushes and trees are placed for illustration purposes. Plans should not be relied on. Interested parties should make and rely on their own enquiries.