



21/38-50 Lyons Road Drummoyne NSW

Ideally positioned at the heart of Drummoyne's shopping and transport hub, this upper level office in the landmark "Sutton Buildings" is an attractive opportunity for small businesses, consultancies or services. The secure and private 41sqm office suite offering quality space with easy client access in this bustling high-traffic location on the corner of Lyons and Victoria Roads.

- + Well-presented with polished timber floors, high ceilings & ducted RC/AC
- + Security screen & entry door into main reception area. Alarm system

[For full version visit the website](https://www.rogermickhail.com.au)

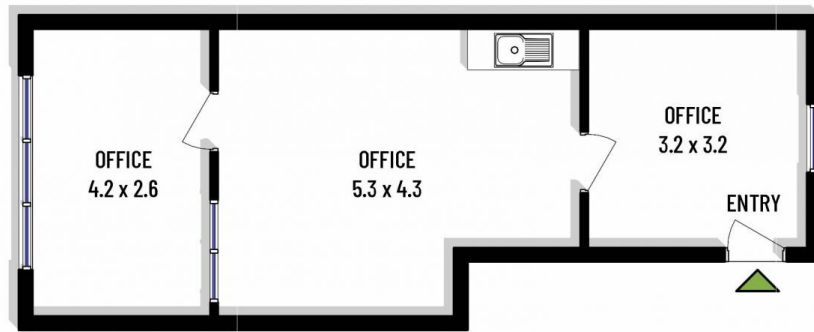
Type	: Offices
Price	: \$26,000 pa
Building Size	: 41 sqm
View	: https://www.rogermickhail.com.au/81774



John Lagounaris
02 9713 5900



Michelle Bernardinis
02 9713 5900



FLOOR PLAN



0 1 2 3 4m

roger **m**
mickhail

21/38-50 Lyons Road, Drummoyne

Internal floor area approx.: 41sqm

The site plan and floor plan are not to scale; measurements are indicative and in meters. Bushes and trees are placed for illustration purposes. Plans should not be relied on. Interested parties should make and rely on their own enquiries.